



FLOOR CLEANING MACHINES

Industrial floor
cleaning machines
made in Italy



THE DIRECT FORWARD THROW
SWEEPER WITH A FRONT DRIVING POSITION

BULL 200

EUREKA REINVENTS
THE CONCEPT OF SWEEPING.

The BULL 200 industrial sweeper is the first machine in the world to introduce BULLsystem® technology.



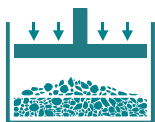
BULL SYSTEM®



DRIVEOVER SYSTEM®



GRADIENT BOOSTER®



LOADBOOSTER®

BULL 200

THE ONLY RIDE-ON SWEEPER THAT OFFERS DIRECT FORWARD THROW SWEEPING AND A FRONT DRIVING POSITION.

The innovative design of the BULL 200 - the only machine on the market that offers **direct forward throw sweeping and a driving position at the front of the machine with an automotive steering system** - makes this industrial sweeper particularly easy to handle, ideal for different applications and types of dirt.

The flagship feature of the BULL 200 is its ability to **pass over speed bumps and manage sudden changes in gradient**. Thanks to the patented BULLsystem® this new Eureka sweeper is **the only machine of its kind which offers a practical solution to this problem**, an impossible task for any other industrial sweeper.

Another patented technology, the Gradient Booster®, enables the BULL 200 to **overcome gradients of 21%** without losing power.

The seriously **tough structure** (the entire machine body and chassis is made of steel), a **wide cleaning path** (up to 2.100 mm) and the **high capacity hopper** (up to 500 L with the LoadBOOSTER® compaction system) do the rest.

The result is a machine that is:

- / High performance
- / Easy to drive
- / Easy maintenance
- / Adapted to both compacted and heavy dirt (gravel, sand...) and to lighter, bulkier debris (paper, pine needles...)
- / Ideal for: industrial areas, logistics hubs, open air, covered and multi-storey parking, pedestrian areas...



LOADBOOSTER®

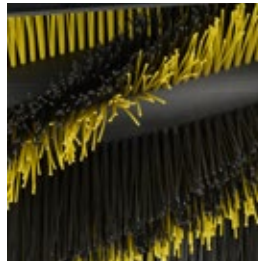
Debris compacting system.



GRADIENT BOOSTER®

To overcome gradients of 21% without losing power.

MULTIBRISTLE® MAIN BRUSH



Unique brushes with mixed bristles to pick up different types of dirt in a single pass.



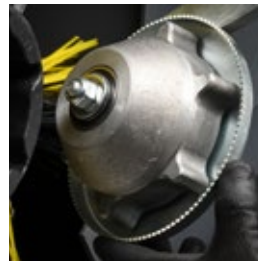
INDEPENDENT TWIN WHEELS



Guarantee better stability, reduced wear of the tyre, a tight turning radius and easy steering from a stationary position.



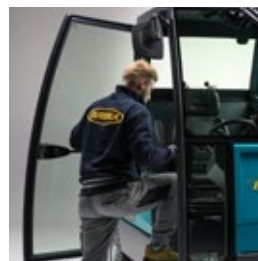
SHARKCAP® - ANTIJAM PROTECTION SYSTEM



Prevents the brush and bearings from being damaged by string, and plastic or metal filaments, safeguards brush performance and lifetime.



DRIVER'S CABIN



Security and driving comfort are increased with the pressurized, air-conditioned cabin. Offers maximum protection to the operator and provides full visibility of the right side brush.



13 M² MULTIPOCKET® FILTER



Antistatic filter, washable, with an automatic shaking system. Delivers high performance filtering that is maintained over time.



WET SIDE BRUSH DUST CONTROL



The side brushes of the BULL 200 can be equipped with a water nebulizing system to keep down dust when sweeping.



DIRECT FORWARD THROW SWEEPING



This sweeping method delivers the best cleaning results. It efficiently manages both fine dust and heavy or bulky debris.



AUTOMOTIVE DRIVING SYSTEM

The forward driving position, adjustable steering wheel, automotive controls and front wheel steering make handling smooth and comfortable.



DRIVEOVER® SYSTEM



The BULL 200 has been designed to pass over speed bumps without difficulty, an impossible task for any other sweeper in the same category.



DOUBLE SIDE BRUSH

On the right side of the machine, there isn't just one, but two side brushes, which raise the standard of cleaning and avoid the loss of debris during curves.



BULLSYSTEM® PATENTED TECHNOLOGY

- All the effectiveness of direct forward throw sweeping.
- All the hopper capacity of a rear loading sweeper.
- All the manoeuvrability of a ride on sweeper with front driving position.
- The ability to overcome speed bumps of any size.
- Complete use of the hopper thanks to the LoadBOOSTER® debris compaction system.



VERSIONS:

BULL 200 HDK - with 1,500 cm³ 4-cylinder, 36 hp Kubota engine with liquid cooling.

BULL 200 HGK LPG - gas version, available soon.

APPLICATIONS:

Industrial manufacturing: Paper mills, cement works, glass works, foundries, brickworks... Logistics: warehouses, logistics hubs, ports and airports...

Public areas: car parks, holiday villages and camp sites, town centres, cycle tracks, theme parks...

SURFACES:

Concrete, porcelain tile, road surfaces, quartz finished concrete, paving stones, self-blocking paving stones, porphyry, cobblestones, asphalt and any other floor types in any condition.

	BULL 200
CLEANING PATH (WITH 2 SIDE BRUSHES)	2.100 mm
CLEANING PATH (WITH 1 SIDE BRUSH)	1.700 mm
CLEANING PATH (CENTRAL BRUSH ONLY)	1.270 mm
HYDRAULIC DIRT CONTAINER CAPACITY	500 L
DUMPING HEIGHT, HYDRAULIC LIFT	1.580 mm
FORWARD SPEED	14.2 km/h
MAX. PRODUCTIVITY	29.820 m ² /h
FILTER TYPE	Multipocket® / 13 m ²
DRIVE	hydraulic
DRIVE MOTOR	hydraulic
MAIN MOTOR	Diesel Kubota 36 Hp
WEIGHT	2.090 kg
SIZE WITH BRUSHES AND CABIN (L X W X H)	2.755 x 2.080 x 2.290 mm
SIZE WITHOUT BRUSHES AND CABIN (L X W X H)	2.635 x 1.750 x 2.050 mm

PLUS



BULL SYSTEM®



DRIVEOVER SYSTEM®



LOADBOOSTER®



GRADIENT BOOSTER®



SHARKCAP®



MULTIPOCKET FILTER®

DIRECT FORWARD THROW SWEEPING / FRONT DRIVING POSITION WITH AUTOMOTIVE STEERING SYSTEM / INDEPENDENT TWIN WHEELS / COMPACT TURNING RADIUS / HIGH VISIBILITY, AIR CONDITIONED CABIN / DOUBLE SIDE BRUSH ON RIGHT SIDE / 13M² FILTER WITH AUTOMATIC CLEANING SYSTEM / KUBOTA ENGINE WITH FRONT RADIATOR / FRAME, CHASSIS AND HOPPER IN STEEL / WET SIDE BRUSH DUST CONTROL / ...



EUREKA S.p.A. UNIPERSONALE
 VIALE DELL'ARTIGIANATO N. 30/32 35013
 CITTADELLA (PD) ITALY
 TEL +39 049 9481800 - FAX +39 049 9481899
 INFO@EUREKASWEEPERS.COM
WWW.EUREKASWEEPERS.COM

