

STORAGE TECHNOLOGIES & MATERIAL HANDLING

STAMH[®]

www.stamh.com

ENGINEERING AND STORAGE SOLUTIONS



AUTOMATED

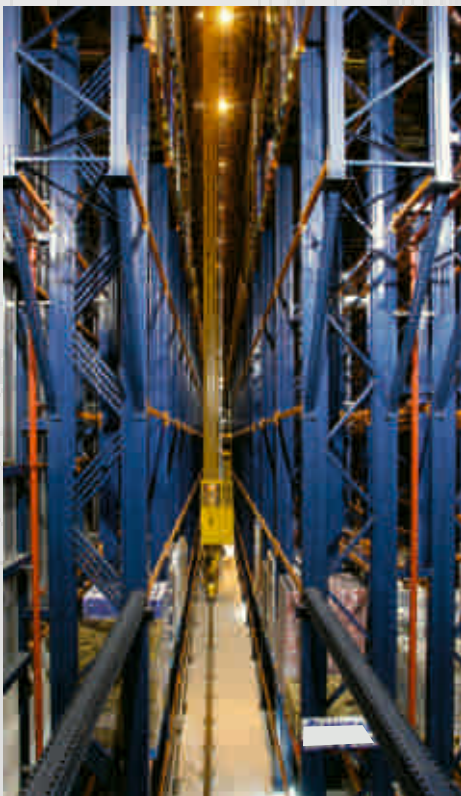
Racking System

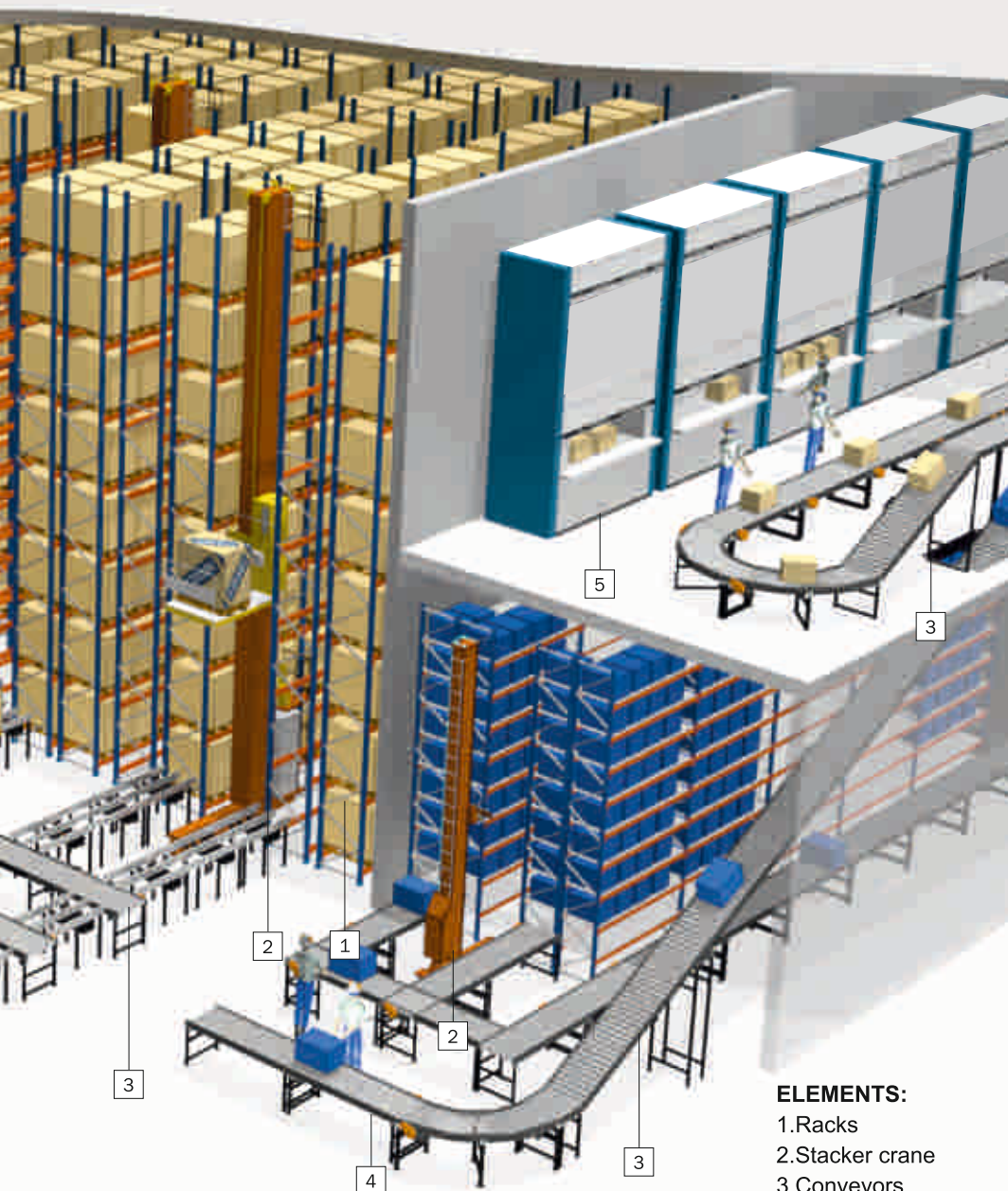
- Ability to work in narrow aisles and **heights greater than 30 m**
- **Triple** increase in the rate of movement in both directions;
- **Automated control** of stacker cranes;
- Continuous control and update inventory;
- **Save all data** processes in the warehouse through management software;
- **Eliminates** human error.

Automated system for storing pallets maximize the use of available space by allowing storage till 40 meters height and the application of narrow aisles where the goods are served through stacker cranes. The system is complex and optimal solution based on general requirements and comprehensive goods flow, in which all processes are controlled by warehouse management software. This type of management keeps track of location and type of all goods in the warehouse, as well as their actual holdings and expiring dates /important for food industry/.

The automation of the warehouses associated with the name "stacker crane". The combination of vertical and horizontal movements and speed of stacker cranes allow pallets to be served faster in terms of time.

Stacker Crane-this robot is responsible for the transfer, positioning and removal of pallets / boxes on different levels, as well as transportation from / to the front of the warehouse in which conveyor lines help its operations.





- ELEMENTS:**
1. Racks
 2. Stacker crane
 3. Conveyors
 4. P&D station
 5. Kardex machines

An automated system for storing boxes operates on a principle " goods to man": items that will be loaded or located on the levels are served by automatic stacker cranes, which brings boxes out to the position of the operator, so that it can be both load/unload the products from inside them. Then, the boxes are returned to their position on levels as the stacker crane performed the same procedure in reverse order.

Working place in the beginning of the system can be equipped with all the necessary elements to optimize the performance of the operator: a terminal station, scanner, boxes, bags, etc.

Automated warehouses for pallets/ boxes are used in treatment processes that allow a direct impact on organizational productivity, reduce costs and improve service process in supply chain.

P&D station-(place for picking and disposal) is located on one of the sides or end of a shelf system. Using the mechanical movements necessary to put the boxes closer to the operator, and stacker cranes can take them or return to their previous locations in the warehouse.



www.stamh.com

STORAGE TECHNOLOGIES & MATERIAL HANDLING

STAMH[®]

STORAGE TECHNOLOGIES & MATERIAL HANDLING

STAMH GmbH

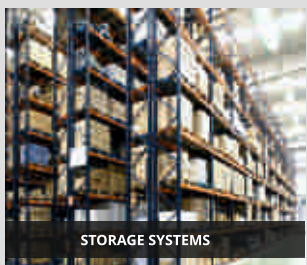
395/15 Linzer Str.

1140 Vienna, Austria

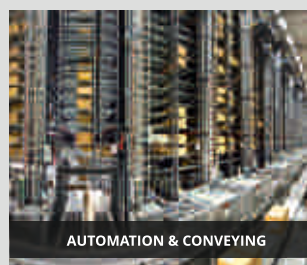
tel.+ 43 1 912 3094; +43 660 261 8226

office@stamh.com

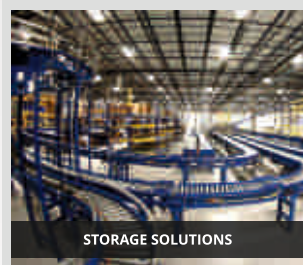
www.stamh.com



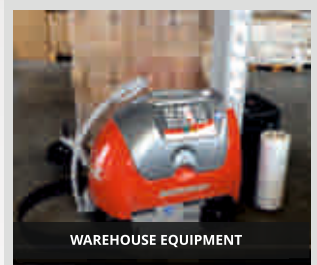
STORAGE SYSTEMS



AUTOMATION & CONVEYING



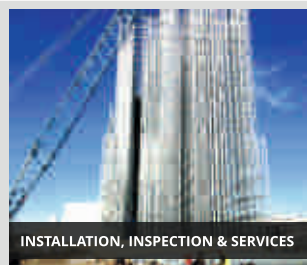
STORAGE SOLUTIONS



WAREHOUSE EQUIPMENT



FORKLIFT TRUCKS



INSTALLATION, INSPECTION & SERVICES



WMS - WAREHOUSE SOFTWARE



PROFESSIONAL CLEANING MACHINES